




DELAWARE ACADEMY OF
FAMILY PHYSICIANS

BRIAN MCDONOUGH, MD, FAFP, FAAPL
Chair, Graduate Medical Education Committee
Department of Family Medicine at St Francis Hospital.



JINSONG ZHANG, MD, FACP
Rheumatologist, Infusion Solutions of Delaware, LLC

A Narrow Window of Opportunity: Diagnosis and Management of Rheumatoid Arthritis in Underserved Populations

1

A Narrow Window of Opportunity:

Diagnosis and Management of Rheumatoid Arthritis in Underserved Populations

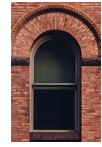
DAFP

April 22, 2023



2

Content Creation



Louis Friedman, DO, FACP

General Internal Medicine

JFK University Medical Center at Hackensack Meridian Health

Woodbridge Medical Associates

Woodbridge, NJ

Donna M. Kaminski, DO, MPH, FAAFP

Family Medicine

Robert Wood Johnson University Hospital Somerset

Somerville, NJ

Sajina Prabhakaran, MBBS, MD

Internal Medicine/Rheumatology

Capital Health Medical Center--Hopewell

Pennington, NJ



3

Disclosures

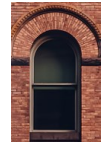


- Speaker: Brian McDonough, MD, FAAFP reports no financial relationships
- Speaker: Jinsong Zhang, MD, FACR reports no financial relationships
- Content Creators
- Louis Friedman, DO, FACP reports no financial relationships.
- Donna M. Kaminski, DO, MPH, FAAFP reports no financial relationships.
- Sajina Prabhakaran, MBBS, MD reports no financial relationships.
- NJAFP Staff:
- Theresa Barrett, PhD, Emelyn Falcon, and Charles Goldthwaite, PhD (Planners) report no financial relationships.
- Conflicts have been resolved according to NJAFP policy.



4

Support

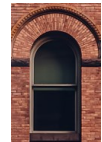


**This program is supported by an educational grant
from **Pfizer, Inc.****



5

Accreditation Statement



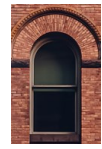
This live activity, *A Narrow Window of Opportunity: Diagnosis and Management of Rheumatoid Arthritis in Underserved Populations* (originally viewed as a live event) on 04/22/2023, has been reviewed and is acceptable for up to **1.00 Prescribed credit(s) by the American Academy of Family Physicians. Physicians should claim only the credit commensurate with the extent of their participation in the activity.**

This activity has been planned and implemented in accordance with the accreditation requirements and policies of the Accreditation Council for Continuing Medical Education (ACCME).



6

Learning Objectives



- Recognize signs and symptoms suggestive of RA
- Determine when to refer patients with RA to a rheumatologist
- Develop a comfort level in prescribing disease-modifying antirheumatic drugs (DMARDs)
- Help patients understand their disease and engage in shared decision making
- Use motivational interviewing to recognize patients' concerns
- Recognize and mitigate implicit bias to build a culture of equity in your practice



7

Rheumatoid Arthritis:

Signs,
Symptoms,
and Impact



8

The Impact of RA



- Most common type of autoimmune arthritis (1.3 million US adults)^{1,2}
- Women account for 75% of diagnosed cases³
- 1-3% of women may be affected in their lifetimes³
- Prevalence differs significantly across race, educational levels, and poverty-income ratio groups.¹
- Independent of gender, non-Hispanic African Americans, individuals with an educational level of less than high school, and those with low family income had a significantly higher RA risk than age-adjusted comparator cohorts.¹
- Total annual RA health cost for US is \$19.3 billion dollars (2010 data).⁴
- Advances in treatment have shifted the economic burden from inpatient costs to indirect costs (e.g., disability, work absenteeism).⁵



Sources: ¹Xu Y, Wu Q. *J Clin Med* 2021;10:3289; ²Helmick CG, et al. *Arthritis Rheum* 2008;58:15-25; ³American College of Rheumatology, 2021; ⁴Cross M, et al. *Ann Rheum Dis* 2014;73:1316-22; ⁵Hsieh P-H, et al. *Ann Rheum Dis* 2020;79:771-7.

9

What Is RA?



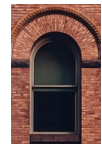
- A chronic autoimmune inflammatory disease in which the body's immune system attacks the lining of the joints^{1,2}
- Damages the synovial tissue that envelops the ends of the bones within a joint, which differentiates it from the cartilage degeneration (or "wear and tear") that characterizes osteoarthritis
- Inflammation eventually causes localized damage (e.g., bone erosion and joint deformity); more systemic effects reported in ~40% of RA patients³
- Untreated RA may cause irreversible joint damage within the first year of onset²
- Symptoms vary in severity across individuals and may "flare" or undergo periods of relative remission



Sources: ¹Agarwal SK. *J Manag Care Pharm* 2011;17(9 Suppl B):S03-S08; ²NIAMS. Rheumatoid arthritis; 2022; ³Mayo Clinic. Rheumatoid arthritis: symptoms and causes; 2022.

10

RA Signs and Symptoms



- Tender, warm, and swollen joints¹
- Joint stiffness that is more notable in the morning or following a period of inactivity¹
- Fatigue, fever, and loss of appetite¹
- Can affect wrists, hands, elbows, shoulders, feet, spine, knees, and jaw²
- Pain usually presents bilaterally³

RA “morning stiffness” usually lasts > 30 minutes but may lessen as the day’s activity commences.



Sources: ¹Mayo Clinic. Rheumatoid arthritis: symptoms and causes; 2022; ²NIAMS. Rheumatoid arthritis; 2022; ³CDC. Rheumatoid arthritis (RA); 2020.

11

Risk Factors for RA



- Age: Onset increases with age, peaking for individuals in their sixties
- Gender: Women are 2-3 times more likely to develop RA than men
- Smoking
- Obesity
- Human leukocyte antigen (HLA) Class II genes
- Early life exposure to secondhand smoke may increase risk of developing RA as an adult
- Women who have never given birth may be at greater risk of developing RA, while women who breastfeed their infants may have a *decreased* risk of RA



Source: CDC. Rheumatoid arthritis (RA); 2020.

12

Diagnosing RA in Primary Care



13



Diagnosing RA



- Early diagnosis and prompt treatment will slow disease progression, minimize potential disability, and improve outcome and quality of life.
- Early symptoms can resemble those of other forms of arthritis.
- Physical examination/medical history, imaging, and laboratory tests can help to rule out other conditions.
- RA symptoms usually need to be present >3 months to consider a diagnosis of RA, although some patients are diagnosed sooner.

No single blood test or physical finding unequivocally confirms a diagnosis of RA.



Source: American College of Rheumatology. Rheumatoid arthritis: fast facts; 2021.

14

What to Ask a Patient with RA Signs and Symptoms



- A review of joint symptoms—location, when/how the patient noted their presence, changes over time
- Limitations that symptoms have imposed on the patient's activities
- Other symptoms that could indicate chronic inflammation (e.g., weight loss, fever, fatigue, weakness, difficulty breathing)
- Other medical conditions (depression/anxiety)
- Family history of RA or family members with similar symptoms
- Medication history
- Diet and activity
- Smoking history
- Vaccination status
- Relevant cancer screenings



15

Imaging in RA Diagnosis



- X-rays, MRI, and ultrasound can help diagnose or monitor disease progression.
- X-rays are often normal during the early stages of RA but can sometimes rule out other conditions.
- MRI of symptomatic areas (e.g., hand or wrist) may support a diagnosis of RA or inflammatory arthritis.
- Early-stage RA is associated with periarticular osteoporosis;¹ hand BMD measurement can predict severity/progression of joint destruction.
- Ultrasound can indicate synovitis, synovial hypertrophy, or increased circulation associated with inflammation.



Source: ¹Kilic G, Ozgocmen S. *World J Orthop* 2015;6:106-16.

16

RA deformities in hands



Boutonniere Deformity
Swan Neck Deformity



Piano key sign of radial styloid
MCP subluxations with ulnar deviation
Z deformity of thumb



17

Erosive Changes in Different Arthritis



Marginal erosion
Periarticular osteoporosis



Central erosion
Subchondral sclerosis



Sclerotic overhanging
edge

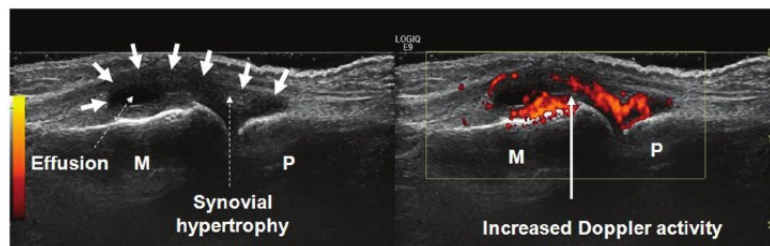


18

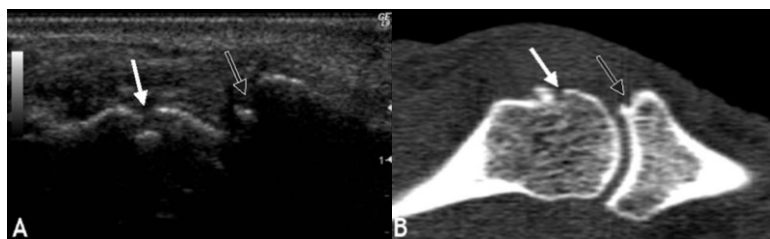
MSK ultrasound in RA diagnosis



Synovitis (with/without Doppler)



Erosion (US vs CT)



19

Blood Tests: Serology



- Rheumatoid factor (RF) and anti-cyclic citrullinated peptide antibodies (ACPA) are serologic markers that can be diagnostic and prognostic indicators of autoimmune disease.
- High-titer RF indicates increased risk for extra-articular involvement, and ACPA suggests aggressive disease with risk for erosive disease.
- Both are negative on presentation in up to 25% of patients with RA and can remain so during follow-up in 20% of these individuals.¹
- Positive results on both tests increase specificity compared to either test alone.
- Seronegative RA patients can become seropositive over time.



Source: ¹Baker JF. Diagnosis and differential diagnosis of rheumatoid arthritis. Waltham MA: UpToDate Inc. 2022.

20

Blood Tests: Acute-phase Reactants



- Erythrocyte sedimentation rate (ESR) and C-reactive protein (CRP) are acute-phase reactants—markers that undergo significant serum concentration changes in response to inflammation.
- Both are typically elevated in RA and can be used to monitor systemic inflammation following initial evaluation and/or diagnosis.¹
- Changes in ESR and CRP levels can be monitored serially to assess treatment response.



Source: ¹Baker JF. Diagnosis and differential diagnosis of rheumatoid arthritis. Waltham MA: UptoDate Inc. 2022.

21

Blood Tests: Antinuclear Antibody (ANA)



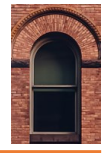
- ANA panel testing using IFA confirms the presence of ANAs associated with autoimmune rheumatic diseases (e.g., RA, SLE, SS, MCTD and some viruses (e.g., EBV, HIV, hepatitis C, parvovirus).
- A positive ANA test indicates an autoimmune reaction process, although up to 15% of healthy people have positive ANA test results.¹
- ANA may be positive in up to 1/3 of patients with RA.²
- ANA testing has limited value in patients who present solely with nonspecific symptoms (e.g., malaise, fatigue).³



Sources: ¹ACR. Antinuclear antibodies (ANA); 2021; ²Baker JF. Diagnosis and differential diagnosis of rheumatoid arthritis. Waltham MA: UptoDate Inc. 2022; ³Nashi RA, Shmerling RH. *Rheum Dis Clin North Am* 2022;48:569-78.

22

ACR/EULAR Classification Criteria for RA



Category	Value	Score
Joint involvement	1 large joint	0
	2-10 large joints	1
	1-3 small joints (w/ or w/o large joints)	2
	4-10 small joints (w/ or w/o large joints)	3
	> 10 joints (at least one small joint)	5
Serology (at least 1 result needed)	Negative RF and negative ACPA	0
	Low-positive RF or low-positive ACPA	2
	High-positive RF or high-positive ACPA	3
Acute-phase reactants (at least 1 result needed)	Normal CRP and normal ESR	0
	Abnormal CRP or abnormal ESR	1
Symptom duration	Less than 6 weeks	0
	Six weeks or longer	1
A cumulative score of ≥ 6 classifies a patient as having definite RA.		



Source: Aletaha D, et al. *Arthritis Rheum* 2010;62:2569-81.

23

Differential Diagnoses



24

Post-viral Arthritis



- Several common viruses, including parvovirus B19, hepatitis B and C, HIV, alphaviruses, and COVID-19 can cause an acute polyarthritis syndrome that could be mistaken for RA.^{1,2}
- However, virally induced polyarthritis rarely lasts more than six weeks, in contrast to RA's chronic and persistent symptoms.
- Patients who experience symptoms for < 6 weeks should be considered for RA but may possibly have post-viral arthritis.
- Clinicians should monitor these patients closely and ask them about recent acute infections and travel.



Sources: ¹Marks M, Marks JL. *Clin Med (Lond)* 2016;16:129-34; ²Farisogullari B, et.al. *RMD Open* 2022;8:e002026.

25

Osteoarthritis (OA)



- Results from a gradual breakdown ("wear and tear") in the cartilage between heavily used joints
- Onsets slowly over a period of years, usually later in life
- Often begins unilaterally and may be limited to one set of joints
- Joint tenderness and pain, but little or no swelling
- Morning stiffness transient if present
- Not associated with whole-body symptoms (e.g., fever, fatigue)



Source: Alberta Health Services. Comparing rheumatoid arthritis and osteoarthritis. <https://myhealth.alberta.ca/Health/Pages/conditions.aspx?hwid=aa19377>; 2022.

26

Systemic Lupus Erythematosus (SLE)



- Chronic autoimmune disorder that may present with joint pain/swelling/stiffness, fever, and fatigue¹
- Symptoms may “flare” and vary widely but can include rashes, chest pain, hair loss, sun/light sensitivity, mouth sores, anemia, renal issues, and ocular sequelae
- ~98% of individuals with lupus test positive for ANA²
- ~20% of women are weakly ANA+; most never develop signs of lupus²
- Evidence to support a diagnosis of SLE includes additional symptoms and full ANA panel (anti-dsDNA, anti-Smith, anti-U1RNP, anti-Ro/SSA, and anti-La/SSB)



Sources: ¹Office on Women's Health. Lupus diagnosis and treatment; 2022; ²Johns Hopkins University Lupus Center. Lupus blood tests; 2021.

27

Inflammatory Bowel Disease (IBD)



- Chronic GI tract inflammation leads to arthritis in ~30% of IBD patients, most commonly peripheral arthritis of the arms and legs and axial arthritis of the spine and hip¹
- Typically does not cause joint deformity or breakdown
- Swelling may be sudden/severe, move among joints, and affect larger joints
- IBD-associated arthritis is RF-negative¹
- Common symptoms include diarrhea, abdominal pain, loss of appetite, unintended weight loss, fatigue, and bloody stools^{2,3}
- Clinicians should assess for abdominal tenderness and ask about family history of GI conditions in patients who present with joint pain



Sources: ¹Arvikar SL, Fisher MC. *Curr Rev Musculoskelet Med* 2011;4:123-31; ²National Institute of Diabetes and Digestive and Kidney Diseases (NIDDK). Ulcerative colitis; 2022; ³NIDDK. Crohn's disease; 2022.

28

Treating RA



29

Treatment Goals



Early diagnosis and proactive treatment can slow progressive joint damage in up to 90% of patients with RA.¹

- Aim to achieve remission or low disease activity.^{2,3}
- Treat to target—i.e., aim toward a clearly defined goal—regardless of disease activity level.³
- Monitor patients regularly.
- Incorporate medical, social, and emotional support.

RA treatment should aim to achieve remission or low disease activity.



Sources: ¹Aletaha D, Smolen JS. *JAMA* 2018;320:1360-72; ²National Institute of Arthritis and Musculoskeletal and Skin Diseases. Rheumatoid arthritis. 2022; ³Fraenkel L, et al. *Arthritis Care Res (Hoboken)* 2021;73:924-39.

30

Overview of Modalities



The Holistic RA Treatment Plan



31

Pharmacotherapy: NSAIDs



- Inhibit prostaglandin formation by blocking the active site of the cyclooxygenase enzymes COX-1 and COX-2¹
- Have independent anti-inflammatory effects and mild-to-moderate analgesic properties¹
- Despite improving pain and stiffness, NSAIDs alone do not modify RA progression or prevent joint destruction^{1,2}
- Agents are comparably efficacious and are associated with risk of GI bleeding and cardiovascular risks^{2,3}
- Responsiveness to NSAIDs does not correlate with changes in serologic marker levels



Sources: ¹Crofford LJ. *Arthritis Res Ther* 2013;15 (Suppl 3):S2; ²Johns Hopkins Arthritis Center. Rheumatoid arthritis treatment; 2022; ³Vonkeman HE, van de Laar MAFJ. *Semin Arthritis Rheum* 2010;39:294-312.

32

Pharmacotherapy: Corticosteroids



- Low-dose corticosteroids can slow radiographic progression in early RA¹
- Long-term use is associated with increased mortality, CV events, and osteoporotic fractures, and there is no consensus about optimal tapering²
- Appropriate as a temporary “bridge” therapy while awaiting DMARDs to take effect or as chronic adjunctive therapy in patients with severe disease that is poorly controlled with NSAIDs and DMARDs³
- ACR/EULAR recommend low-dose glucocorticoids (≤ 10 mg/day of a prednisone equivalent) when starting a DMARD or for ≤ 3 months when treating a flare^{4,5}
- ACR strongly recommends initiating a conventional DMARD without longer-term (≥ 3 months) glucocorticoids over doing so with them⁶



Sources: ¹Malysheva O, Baerwald CG. *Clin Exp Rheumatol* 2011;29:S113-S15; ²Volkman ER. *Lancet* 2020;396:218-19; ³Johns Hopkins Arthritis Center. Rheumatoid arthritis treatment; 2022; ⁴Singh JA, et al. *Arthritis Rheumatol* 2016;68:1-26; ⁵Smolen JS, et al. *Ann Rheum Dis* 2017;76:960-77; ⁶Fraenkel L, et al. *Arthritis Care Res (Hoboken)* 2021;73:924-39.

33

Pharmacotherapy: Disease-modifying Antirheumatic Drugs (DMARDs)



- DMARDs **improve symptoms**, **alter the disease course**, and **improve radiographic outcomes** in patients with RA.¹
- Although DMARDs generally act more slowly on RA (onset can take up to 6 weeks) than do NSAIDs or glucocorticoids, their introduction effectively shifted the goal of therapy from symptom relief to sustained remission.^{2,3}



Sources: ¹Johns Hopkins Arthritis Center. Rheumatoid arthritis treatment; 2022; ²Nam JL, et al. *Ann Rheum Dis* 2017;76:1113-36; ³Romão VC, et al. *Immunol Res* 2014;60:289-310.

34

Conventional DMARDs Approved for RA*



Category	Agents (Alphabetical)
Conventional DMARDs	Hydroxychloroquine (HCQ)
	Leflunomide (LEF)
	Methotrexate (MTX)
	Sulfasalazine (SSZ)



***Specific indications vary.**

35

Biologic DMARDs Approved for RA*



Category	Mechanism of Action	Agents (Alphabetical)
Biologic DMARDs (bDMARDs)	TNF Inhibitor	Adalimumab Certolizumab pegol Etanercept Golimumab Infliximab
	IL-6 Receptor Inhibitor	Sarilumab Tocilizumab
	Anti-CD20 Antibody	Rituximab
	T-cell Costimulatory Inhibitor	Abatacept
	IL-1 Receptor Antagonist	Anakinra



***Specific indications vary.**

36

Targeted Synthetic DMARDs Approved for RA*



Category	Mechanism of Action	Agents (Alphabetical)
Targeted Synthetic DMARDs (tsDMARDs)	JAK Inhibitors	Baricitinib
		Tofacitinib
		Upadacitinib



*Specific indications vary.

37

Guiding Principles for Prescribing DMARDs



2021 ACR RA treatment guidelines focus on using DMARDs, with strong and conditional recommendations based on various scenarios.¹ DMARD treatment decisions should:

- Follow a shared decision-making process
- Be reevaluated within a minimum of 3 months based on efficacy and tolerability of the chosen agent(s)
- Follow a systematic, treat-to-target approach that involves frequent monitoring of disease activity and modifying treatment to reach a pre-defined target of low disease activity or remission
- Consider tapering only when patients have been at target for at least 6 months

DMARDs should generally be initiated when RA diagnosis is confirmed.²



Sources: ¹Fraenkel L, et al. *Arthritis Care Res (Hoboken)* 2021;73:924-39; ²Johns Hopkins Arthritis Center. Rheumatoid arthritis treatment; 2022.

38

ACR Recommendations for Prescribing DMARDs (1)



- For DMARD-naïve patients with symptomatic early RA, consider DMARD monotherapy (preferably methotrexate) over combination DMARD therapy.¹
- For DMARD-naïve patients with moderate to high disease activity, use MTX monotherapy over HCQ or SSZ, bDMARD or tsDMARD monotherapy, or the combination of MTX plus a non-TNFi bDMARD or tsDMARD.²
- Switching RA therapies when low disease activity or clinical remission is achieved should be considered only at the clinician's discretion in consult with the patient.¹

A treat-to-target strategy to reduce disease activity by $\geq 50\%$ within 3 months and achieve remission/low disease activity within 6 months can improve outcomes and prevent disability.³



Sources: ¹Singh JA, et al. *Arthritis Rheumatol* 2016;68:1-26; ²Fraenkel L, et al. *Arthritis Care Res (Hoboken)* 2021;73:924-39; ³Aletaha D, Smolen JS. *JAMA* 2018;320:1360-72.

ACR Recommendations for Prescribing DMARDs (2)



- Move to combined therapy if moderate or high disease activity persists despite DMARD monotherapy (with or without glucocorticoids).¹
- Add another DMARD, a TNFi, or a non-TNFi bDMARD (all choices with or without MTX and in no order of preference) rather than continue DMARD monotherapy.
- Add 1-2 DMARDs to TNFi therapy if disease activity remains moderate or high despite TNFi monotherapy in a DMARD-naïve patient.
- If disease activity is low, continue DMARD therapy.¹
- If disease is in remission, do not discontinue all RA therapies.
- Do not routinely consider dose reduction for patients in remission for < 6 months.²



Sources: ¹Singh JA, et al. *Arthritis Rheumatol* 2016;68:1-26; ²Fraenkel L, et al. *Arthritis Care Res (Hoboken)* 2021;73:924-39.

DMARDs, Pregnancy, and Family Planning



- MTX and LEF are considered teratogens and should not be prescribed to women with RA at pre-conception, during pregnancy, or while breastfeeding.¹
- The ACR conditionally recommends discontinuing anakinra, abatacept, rituximab, and tocilizumab during pregnancy.
- HCQ, SSZ, and certolizumab are strongly recommended to be continued pre-conception, during pregnancy, and during breastfeeding.
- Other TNFi are conditionally recommended in pre-conception and during 1st and 2nd trimesters but strongly recommended during breastfeeding. Rituximab is strongly recommended during breastfeeding.

Pre-pregnancy counseling is recommended for any patient suspected of rheumatic or musculoskeletal disease.



Source: Sammaritano LR, et al. *Arthritis Rheumatol* 2020;72:529-56.

41

Vaccines and RA



- Patients who initiate or take DMARDs should receive all recommended pneumococcal, influenza, hepatitis B, and HPV vaccines.¹
- CDC recommends that adults ≥ 50 years and immunocompromised adults aged ≥ 19 years who have RA receive the recombinant zoster vaccine for shingles.²
- ACR strongly recommends prophylactic antiviral therapy over frequent monitoring alone for HBV+ patients who are initiating any bDMARD or tsDMARD.³
- Patients should be tested for tuberculosis (TB) before initiating bDMARDs and tsDMARDs. TNF inhibitor treatment is associated with up to 25X increased relative risk for TB, depending on clinical setting and agent used.⁴



Sources: ¹Singh JA, et al. *Arthritis Rheumatol* 2016;68:1-26; ²Dooling KL, et al. *MMWR Morb Mortal Wkly Rep* 2018;67:103-08; ³Fraenkel L, et al. *Arthritis Care Res* 2021;73:924-39; ⁴Solovic I, et al. *Eur Respir J* 2010;36:1185-206.

42

Physical Activity



- RA is associated with “rheumatoid cachexia” that includes decreased joint health, fatigue, increased incidence and progression of CVD, and accelerated loss of muscle mass.¹
- Exercise training can reverse cachexia and improve function without exacerbating disease activity.^{1,2}
- The EULAR recommends exercise and maintenance of healthy body weight for people with rheumatic and musculoskeletal diseases.³

RA patients should be encouraged to be active within appropriate contexts.



Sources: ¹Cooney JK, et al. *J Aging Res* 2011;Article No 681640; ²Colberg SR, et al. *Diabetes Care* 2010;33:e147-e67; ³Gwinnutt JM, et al. *RMD Open* 2022;8:e002168.

43

Dietary Interventions



- “Anti-inflammatory” or “Mediterranean” diets are rich in whole foods (e.g., fruits, vegetables, fish, nuts, beans, olive oil) but low in processed foods and saturated fats.¹
- Foods commonly included in these diets can lower blood pressure, protect against chronic conditions, reduce inflammation, and support weight-loss regimens.
- Obesity is a strong predictor of worse clinical outcomes and treatment responses in patients with early RA.²
- Anti-inflammatory diets are part of a healthy lifestyle that may positively impact RA.



Sources: ¹Harvard Medical School. Harvard health blog: a practical guide to the Mediterranean diet; 2019; ²Levitsky A, et al. *RMD Open* 2017;3:e000458.

44

The Primary Care Clinician's Role in RA Management



45



The Role of the Primary Care Clinician



- Identify patients at risk for RA or other connective tissue or autoimmune disorders
- Assess and determine referral needs
- Understand cultural factors and patient preferences for treatment
- Discuss treatment options and adjunctive interventions
- Coordinate efforts with an RA care team (e.g., rheumatologist, physical therapist, gynecologist, pulmonologist, dietitian, social worker)
- Keep the patient actively engaged in disease management

Primary care clinicians play critical roles in identifying patients who have or are at risk for RA and ensuring that they receive prompt and effective care.



46

Talking with Your Patient about RA (1)



- Remind the patient that they are not at fault for developing RA.
- Stress that many effective pharmacologic options can treat RA.
- Stress that approved treatments will improve pain symptoms and prevent joint damage.
- Discuss medication side effects and onset of efficacy.
- Discourage the use of non-evidence based practices and agents.
- Recognize that managing RA is a journey.



47

Talking with Your Patient about RA (2)

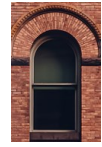


- Reiterate that proper management will enable the patient to live a meaningful life with RA.
- Initiate a conversation about how lifestyle changes favorably affect RA symptoms and management.
- Discuss reproductive issues and family planning in the context of RA management with appropriate patients.
- Discuss the patient's role in adhering to and modifying treatment plans.
- Encourage the patient to use the practice's patient portal.



48

When to Refer to a Rheumatologist



The Expert Panel recommends referring any patient for whom you are confident of an RA diagnosis. Other situations that warrant referral include:

- RA symptoms but normal serology
- Family history of RA or autoimmune disease
- Other organ involvement, especially lung nodules
- High CCP levels or other markers of systemic inflammation
- Clinician discomfort with prescribing and managing DMARDs
- Requirement of medications beyond DMARDs

The American College of Rheumatology provides a searchable directory of rheumatologists at <https://my.rheumatology.org/find-a-rheumatologist>.



49

Addressing Disparities in RA Care



50

The Culturally Informed Office



- Language- and topic-appropriate materials
- Staff to match population served
- Bilingual or language-appropriate wall posters and signs
- Written text geared for comprehension
- A trained medical interpreter or access to interpretation services
- Staff trained to overcome cultural misconceptions
- Recognition of culturally observed holidays

Establishing a culturally informed office is the first step toward providing culturally appropriate care.



51

Considerations for Providing Culturally Appropriate Care (1)



- Education level and health literacy (i.e., ability to understand concepts)
- Family integration and support systems (church, community)
- Cultural judgments about disease and norms regarding body image
- Knowledge about RA
- Learning styles and motivational strategies



Source: Juckett G. *Am Fam Physician* 2005;72:2267-74.

52

Considerations for Providing Culturally Appropriate Care (2)



- Spiritual beliefs (e.g., belief that events are predetermined by fate)
- Nutritional preferences
- Alternative/herbal practices and folk remedies
- Language issues



Source: Juckett G. *Am Fam Physician* 2005;72:2267-74.

53

Partnering with Minority Patients



54

Partnering with Minority Patients



- Appreciate value system associated with patient's cultural heritage
- Emphasize holistic care by recognizing biologic, psychological, and faith-based components
- Provide framework to understand level of disease severity and realistic treatment options
- Promote trust through engaged attitude
- Avoid paternalistic stance

Culturally informed care is based on a partnership between the patient and the healthcare provider.



55

Cross-Cultural Interviewing



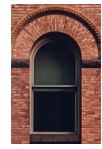
- Establish trust through "small talk"
- Use open body language
- Speak slowly and directly to the patient (rather than to the interpreter)
- Use short sentences and a normal tone of voice
- Avoid use of idioms
- Ask patient what illness means to her and about her current treatments
- Provide treatment instructions in writing
- Have patient repeat instructions in his/her own words



Source: Juckett G. *Am Fam Physician* 2005;72:2267-2274.

56

Cross-cultural Interview Questions (1)



- What is your native country?
- How long have you been here?
- What do you think is wrong?
- What do you call the illness?
- What do you think has caused the illness?
- Why do you think that the illness began when it did?
- What problems do you think that the illness causes?



Source: Juckett G. *Am Fam Physician* 2005;72:2267-2274.

57

Cross-cultural Interview Questions (2)



- How severe is your illness?
- What kind of treatment do you think is necessary?
- What are the most important results you hope to receive from this treatment?
- What do you fear most about the illness?
- How do you cope with your feelings?
- What can you change?
- What types of support do you have to help you deal with this illness?



Source: Juckett G. *Am Fam Physician* 2005;72:2267-2274.

58

The “Teach-back” Approach



“Teaching back”

Have the patient repeat your statements in their own words.



- Assesses patient’s health literacy and language proficiency
- Promotes understanding of cultural issues
- May facilitate adherence to an intervention



Source: Juckett G. *Am Fam Physician* 2013;87:48-54.

59

Culturally Informed Care for Latino Patients



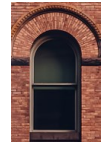
- Listen for somatic presentation of complaints
- Recognize that disease may be perceived as internal/external imbalance (e.g., body and soul)
- Be aware of folk-healing traditions
- Incorporate support systems into treatment (family, clergy, social workers, counselors)
- Recognize central role of male family members
- Provide trained medical interpreter when needed



Source: Juckett G. *Am Fam Physician* 2013;87:48-54.

60

Culturally Informed Care for African-American Patients



- Respect the patient's understanding of illness
- Use open-ended questions to ensure that you and the patient have common meaning
- Recognize the patient's medical beliefs, including folk-, home-, and herbal-based remedies
- Recognize the role of spirituality as a coping mechanism
- Incorporate beneficial or neutral folk remedies into the plan of care
- Recognize that medication cost and complex dosage instructions may promote non-adherence.



61

Case Study: *Sheila* Diagnosing RA in Primary Care



62

Case Study: Sheila



- 30 y/o African-American woman who complains that both hands have hurt off and on for ~3 months.
- Wrists swollen, red, and tender
- Ibuprofen and running hands under hot water provide temporary relief
- Reports feeling tired lately and sometimes awakens at night because her hand is asleep
- Difficulty lifting objects such as a suitcase
- Planning to start a family and concerned that she will be unable to care for a baby without pain



63

Case Study: Sheila



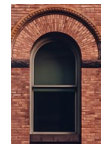
Could Sheila have RA?

- Yes.** She shows the hallmark bilateral presentation of swollen joints, which suggests RA. RA often onsets in women of Sheila's age, and RA symptoms commonly flare and may remit.
- No.** RA is unlikely to affect a young and healthy woman, and the pain associated with RA usually does not remit.



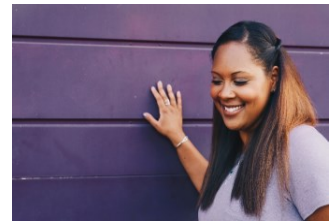
64

Case Study: Sheila



Sheila's exam results:

BP: 130/80 mm Hg
Pulse: 78 beats/minute
Physical exam: Normal
BMI: 28 kg/m²
Alcohol or tobacco use: No
Prescription medications: None.



65

Case Study: Sheila



What other questions should you ask to help diagnose RA?

- a) Do other joints besides your wrists hurt?
- b) At what time of day do you feel the pain most acutely?
- c) Did you first notice the pain in conjunction with any specific event? (e.g., viral infection, life stress)
- d) Do you have a family history of arthritis or similar conditions?
- e) All of the above.



66

Case Study: Sheila



- States that knuckles and feet sometimes hurt.
- Pain peaks in the morning.
- Palpation of her hands indicates tenderness in the second, third, and fourth metacarpophalangeal (MCP) joints.
- Proximal interphalangeal (ICP) joints feel warm.



67

Case Study: Sheila



You order CBC and liver/renal function tests, but what other tests will be helpful to proceed?

- Routine lipid panel
- Immunofluorescent ANA test
- Hepatitis panel
- Serology (RF, ACPA)
- Acute-phase reactants (ESR, CRP)
- Thyroid stimulating hormone (TSH)
- All of the above.



68

Case Study: Sheila



Sheila is up to date on flu and COVID-19 vaccines but contracted COVID about one year ago. Are her symptoms consistent with post-viral arthritis?

a) **Yes.** Post-viral arthritis is a long-term condition that typically lasts up to one year post-infection.

b) **No.** Virally induced polyarthritis rarely lasts more than six weeks, in contrast to RA's chronic and persistent symptoms. Patients who report experiencing symptoms for fewer than six weeks should be considered for RA but may possibly have post-viral arthritis.



69

Case Study: Sheila



Are her symptoms consistent with a diagnosis of osteoarthritis (OA)?

a) **Yes**

b) **No**



70

Case Study: Sheila



Sheila's lab results indicate elevated ESR and CRP, and positive ANA, but she is negative for RF and ACPA. The first two results are consistent with a diagnosis of RA, but what about the seronegative results?

- a) A seronegative result is inconsistent with a diagnosis of RA, and you should consider another diagnosis.
- b) A seronegative result is relatively common in patients with RA and is consistent with a diagnosis of RA.
- c) Serology results may change over time with disease progression, and Sheila has symptoms of early-stage RA.
- d) Both *b* and *c* are correct.



71

Case Study: Sheila



What points should you discuss with Sheila now?

- a) RA can be treated using safe and effective therapies.
- b) Approved treatments will improve pain symptoms and prevent irreversible joint damage.
- c) Successful RA management is a journey that involves shared decision-making.
- d) Family planning will likely impact the course of treatment.
- e) Initiating lifestyle changes can favorably affect RA outcomes.
- f) Sheila will play an active role in adhering to treatment and discussing changes to treatment plans.
- g) All of the above.



72

RA Resources for Clinicians and Patients



American College of Rheumatology (ACR)	rheumatology.org
The Arthritis Foundation	arthritis.org
National Institute of Arthritis and Musculoskeletal and Skin Diseases (NIAMS)	niams.nih.gov
The Mayo Clinic	mayoclinic.org
Centers for Disease Control and Prevention	cdc.gov



73

Conclusion and Clinical Pearls



- RA is treatable and can often be managed in the primary care setting.
- Early diagnosis and prompt treatment are central components of successful management.
- Treatment should aim to achieve remission or low disease activity.
- DMARDs are highly effective pharmacologic options to manage RA and will improve pain symptoms and prevent joint damage.
- Disparities occur in the diagnosis and treatment of RA, with minority populations being underserved.
- Informed care is based on a partnership between the patient and clinician that incorporates biological and psychological aspects within a holistic framework.



74

THANK YOU!

**Brian McDonough, MD,
FAAFP**

*St Francis Hospital
Family Medicine Residency
Program
GMEC Chairperson*

Jinsong Zhang, MD, FACR
*Rheumatologist
Infusion Solutions of Delaware*

